

Drawing



Tools for Chefs

Hendi B.V.  
Steenoven 21  
3911 TX Rhenen  
The Netherlands

Batch #

179420 and up

Appliance part#

201435

Description

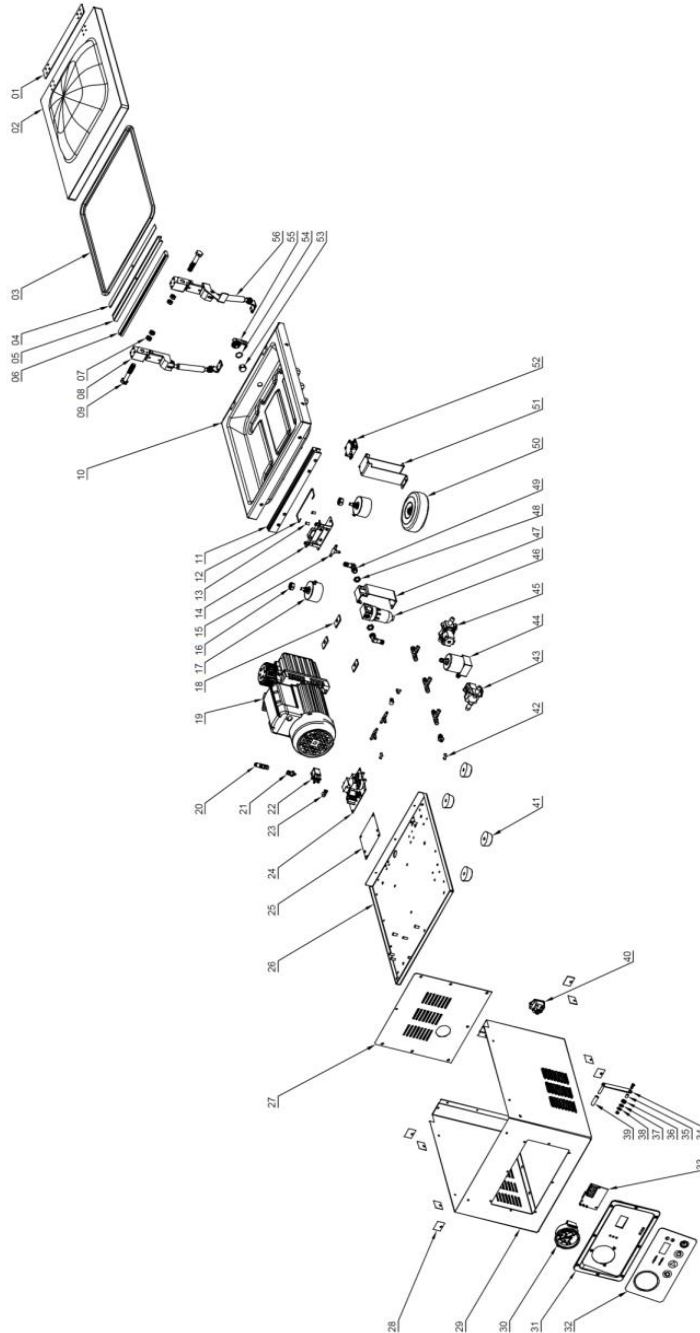
Vacuum chamber packaging machine Profi Line 300

Date 04-11-2020


Revision #

1.0

Revision First Bill of Materials (BOM)



## Bill of materials (BOM)

 <b style="font-size: 24pt; font-weight: bold;">HENDI</b> Tools for Chefs <b>Hendi B.V.</b> Steenoven 21 3911 TX Rhenen The Netherlands	<b>Batch #</b>	<b>Appliance part#</b>
	179420 and up	201435
	<b>Description</b>	
Vacuum chamber packaging machine Profi Line 300		

<b>Date</b>	04-11-2020	<b>Revision #</b>	1.0
<b>Revision</b>	First Bill of Materials (BOM)		


Item	Description	Part#	Quantity	Remark	Picture
1	Vacuum Lid Hinge Cover	nss	1	Available as 946763	
2	Vacuum Lid	946763	1	Incl. Items 1,3,4,5 and 6	
3	Gasket Lid	945681	1	Available as 946763	
4	Holder Silicone Gasket	nss	1	Available as 946763	
5	Sealing for Holder Silicone Gasket	nss	1	Available as 946763	
6	Silicone Gasket	942406	1	Incl. Item 4 and 5	
7	Nut M10	n/a	2		
8	Hinge Assembly (Left)	n/a	1		
9	Bolt M10	n/a	2		
10	Vacuum Chamber	n/a	1		
11	Sealing Bar Complete Assembly	942413	1		
11A	Teflon tape (top side sealbar, 65mm x 1m)	936801	1	Not shown on exploded view	
11B	Teflon Tape Whole Roll (65mm*30m)	942666	1	Not shown on exploded view	
11C	Heating Wire	942673	1	Not shown on exploded view	
12	Locking pin	942437	1		
13	Bracket Locking Pin	n/a	1		
14	Vacuum Bag Holder Complete Assembly	942444	1		
15	3-Way connector	942505	2		
16	Nut M12	nss	2	Available as 942451	
17	Sealbar riser	947005	2	Incl. Item 16	
18	Damper	946770	3		
19	Vacuum Pump	946787	1		
20	Brass Connector (Big -> Small)	n/a	2		
21	Connector	n/a	1		
22	Electronic Valve for sealbar riser	946794	1		
23	Mounting Pin	n/a	1		
24	Main PCB	nss	1		
25	Main PCB Insulation	nss	1		
24 + 25	Main PCB with Insulation Pad	946800	1	Incl. Item 24 and 25	
26	Bottom Plate	n/a	1		
27	Back Cover	n/a	1		
28	Protective Pad for Lid	n/a	4		
29	Housing	n/a	1		
30	Vacuum Gauge	946817	1		
31	Control Panel Bracket	n/a	1		
32	Membrane Switch Panel	946824	1		
33	Control PCB	946831	1		
34	Lock for Lid	946848	1	Incl. Items 34-39	
35	Washer	nss	1	Available as 946848	
36	Washer	nss	1	Available as 946848	
37	Screw	nss	1	Available as 946848	
38	Nut	nss	1	Available as 946848	
39	Protective Sleeve for Lock	nss	1	Available as 946848	
40	Socket C14 With Fuse	n/a	1		
41	Foot	942543	4		
42	2-Way connector (90°)	n/a	1		
43	Inlet Valve	942475	2		
44	Vacuum Chamber Valve	946855	1		
45	Outlet Valve	942550	1		
46	Air Filter	946862	1		
47	Air Filter Bracket	n/a	1		
48	Connector	n/a	1		
49	Connector (90°)	n/a	1		
50	Toroidal Transformer	n/a	1		

51	Microswitch Bracket	n/a	1		
52	Microswitch Assembly	946879	1		
53	Vacuum Chamber Outlet Connector	n/a	1		
54	Vacuum Chamber Outlet Gasket	946886	1		
55	Hinge Assembly (Right)	n/a	1		
56	Gas spring (80N)	948255	2		
57	Power Cord	900680	1	Not shown on exploded view	
58	Oil Exhaust Filter	946893	1	Not shown on exploded view	

n/a -> not available

nss -> not sold separately

**Circuit diagram**

 <b>HENDI</b> Tools for Chefs <b>Hendi B.V.</b> Steenoven 21 3911 TX Rhenen The Netherlands	<b>Batch #</b>	<b>Appliance part#</b>
	179420 and up	<b>201435</b>
	<b>Description</b>	
	Vacuum chamber packaging machine Profi Line 300	

<b>Date</b>	04-11-2020	<b>Revision #</b>	1.0
<b>Revision</b>	First Bill of Materials (BOM)		

